

SYNCING YOUR KETO-MOJO® METER WITH YOUR MOBILE DEVICE USING BLUETOOTH



Syncing allows your **Keto-Mojo® GK+** Blood Glucose and β -Ketone Meter and your mobile device to communicate with each other.

Instructions for syncing your meter with the **Keto-Mojo®** iOS and Android App can be found by either scanning the QR code, or visit:

▶ <https://keto-mojo.com/bluetooth-app-connection/>

Follow the guidelines and instructions to successfully sync the meter with the **Keto-Mojo®** App.

CLEANING AND DISINFECTING

Please refer to the User's Manual for details on proper cleaning and disinfection. Please note that all parts of the system may still transmit infectious disease from bloodborne pathogens even after cleaning and disinfection.



ACTIVATE YOUR LIFETIME WARRANTY
REGISTER NOW: keto-mojo.com/warranty

GET STARTED NOW!

We have helpful resources, including articles, recipes, and more! **Keto-Mojo.com**



Learn how to avoid common errors and get answers to frequently asked questions: keto-mojo.com/help-center



Short videos are a great way to get started: keto-mojo.com/topics/how-to-series



Learn about App functionality and troubleshooting: keto-mojo.com/help-category/bluetooth-meter-functions-app



Have questions or comments?
Contact our friendly and experienced Customer Support team:

Online: keto-mojo.com/contact-us

Email: support@keto-mojo.com

Phone: 1 (800) 513-1965

Manufactured for: **KETO-CHECK, INC.** 952 School St. Suite 212 Napa, CA 94559-2824 Tel: 800.513.1965 • 10am-4pm PST

For assistance outside of these hours, please contact your healthcare professional.

©2020 Keto-Check, INC.

TROUBLESHOOTING YOUR METER

Refer to your User's Manual for complete troubleshooting and error information, or contact Keto-Mojo Customer Support for further assistance.

ERROR	WHAT IT MEANS	WHAT YOU SHOULD DO
E 1	Blood or control solution was added before flashing blood drop appeared.	Discard the test strip and repeat the test with a new test strip. Wait until you see the flashing blood drop on the display before testing.
E 2	The meter senses a used or contaminated test strip.	Discard the test strip and repeat the test with a new test strip. Wait until you see the flashing blood drop on the display before testing.
E 3	Incorrect test strip.	Discard the test strip and repeat the test with a new test strip. Make sure that you are using a Keto-Mojo® Blood Glucose or Keto-Mojo® β -Ketone Test Strip.
E 4	Incorrect sample.	Discard the test strip and repeat the test with a new test strip. Make sure that you are using a blood sample or Keto-Mojo® Blood Glucose or Keto-Mojo® β -Ketone Control Solution.
E 5	Temperature out of range.	Move to an area that is within the operation range for the meter. Let the meter adjust to this temperature for 20 minutes before testing.
E 6 E 7	Potential hardware issue.	Take out the battery and restart the meter. If the problem continues, contact Keto-Mojo Customer Support at 1 (800) 513-1965, Monday - Friday 10 AM - 4PM PST or email support@keto-mojo.com .
E 10	Insufficient sample.	Discard the test strip, repeat the test with a new test strip and apply enough sample to fill check window of the test strip.
E 11	Low battery indication.	Replace the batteries. Open the battery compartment located on the back of the meter and remove and replace the AAA batteries.
HI	Blood glucose test result is above 600 mg/dL; β -ketone test result is above 8.0 mmol/L.	Wash and dry your hands and the test site well. Then repeat the test using a new test strip. If your result still flashes HI , contact your healthcare professional as soon as possible.
LO	Blood glucose test result is below 20 mg/dL; β -ketone test result is below 0.1 mmol/L.	Wash and dry your hands and the test site well. Then repeat the test using a new test strip. If your blood glucose result still flashes LO , contact your healthcare professional as soon as possible.



GK+ blood glucose & β -ketone
dual monitoring system

QUICK REFERENCE GUIDE



Read your User's Manual for complete instructions before performing a test.

Number: 1205096702
Effective Date: 2020-07-28

PREPARE THE LANCING DEVICE

For fingertip sampling, adjust the depth penetration to reduce discomfort. Prior to testing, wipe the testing site with an alcohol prep pad or use soapy water. Dry your hands and the test site thoroughly.

1 Unscrew the lancing device cover from the body of the lancing device. Insert a sterile lancet into the lancing device.

2 Hold the lancet firmly in the lancing device and twist the safety tab of the lancet until it loosens, then pull the safety tab off the lancet. Save the safety tab for used lancet disposal.

3 Carefully screw the cover back onto the lancing device. Avoid contact with the exposed needle. Make sure the cover is fully sealed on the lancing device.

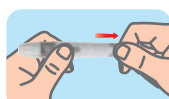
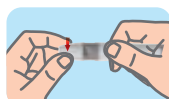
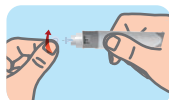
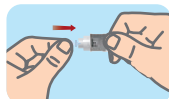
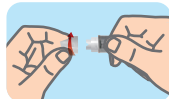
4 Adjust the puncture depth by rotating the lancing device cover. There are several different puncture depth settings. To reduce discomfort, use the lowest setting that still produces an adequate drop of blood.

ADJUSTMENTS:

- 1 for delicate skin
- 2 & 3 for normal skin
- 4 & 5 for calloused or thick skin

Note: Greater pressure of the lancing device against the puncture site will also increase the puncture depth.

5 Pull the spring loader at the bottom of the device. You may hear a click to indicate the lancing device is now loaded and ready for obtaining a drop of blood.



PERFORMING A BLOOD GLUCOSE AND KETONE TEST

1 Pull the spring loader at the bottom of the device.

2 Remove test strip from pouch and insert the test strip (color side up) into the meter in the direction of the arrows. The meter turns on automatically.

3 The meter is ready to test when the symbol of a test strip with a flashing blood drop appears.

4 Press the lancing device against the puncture site with the device cover resting on the skin. Push the release button to prick the puncture site.

5 Once the round blood drop has formed, immediately touch the tip of the test strip to the drop of blood until the blood channel is full and you hear a beep. The blood is pulled into the test strip tip via capillary action. Do not place blood on top of the test strip.



6 Once the blood is pulled into the channel, the meter counts down from 5 to 1 for blood glucose, and from 9 to 1 for blood β -ketone.

Your test result is then automatically displayed and stored in the meter's memory.

GLUCOSE READINGS



Glucose reading counts down from 5 seconds.



Glucose reading in mg/dL.

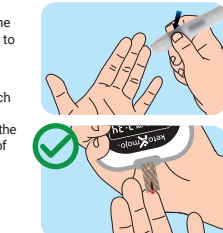
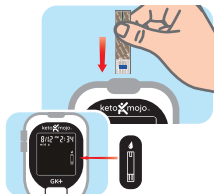
KETONE READINGS



Ketone reading counts down from 9 seconds.



Ketone reading in mmol/L.



MEASURE BOTH GLUCOSE & KETONES WITH THE KETO-MOJO® GK+ BLOOD GLUCOSE & β -KETONE METER

SIDE BUTTONS

Toggle between various functions and settings.

MAIN/POWER BUTTON

Press to turn meter on/off. Use to switch between functions and to set settings.



STRIP PORT

Insert a test strip in the strip port at the top of the meter.

The strip port light turns on automatically when the meter is on.

DISPLAY

Shows test results, messages and related information.

EJECTOR BUTTON

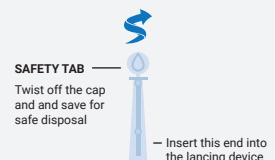
Push up on button to eject testing strip from meter.



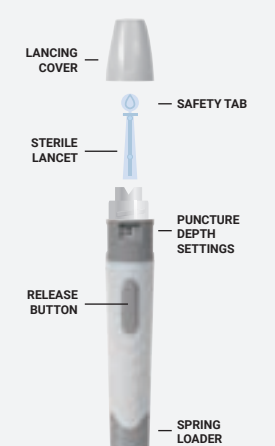
BATTERIES

Requires 2 AAA batteries. (Included)

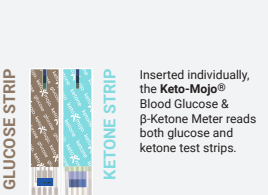
SINGLE LANCET



LANCING DEVICE



TESTING STRIPS



BLOOD SAMPLE TIP

Where the blood is drawn in.



ELECTRODE END

This end is inserted into the test strip port on the meter with the electrode facing up.